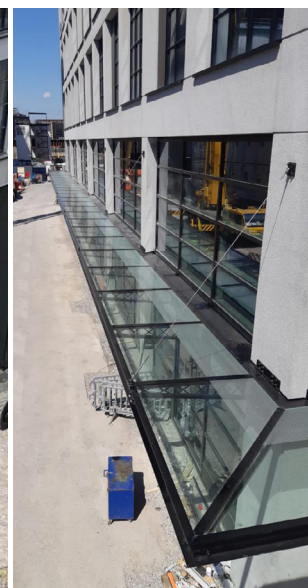
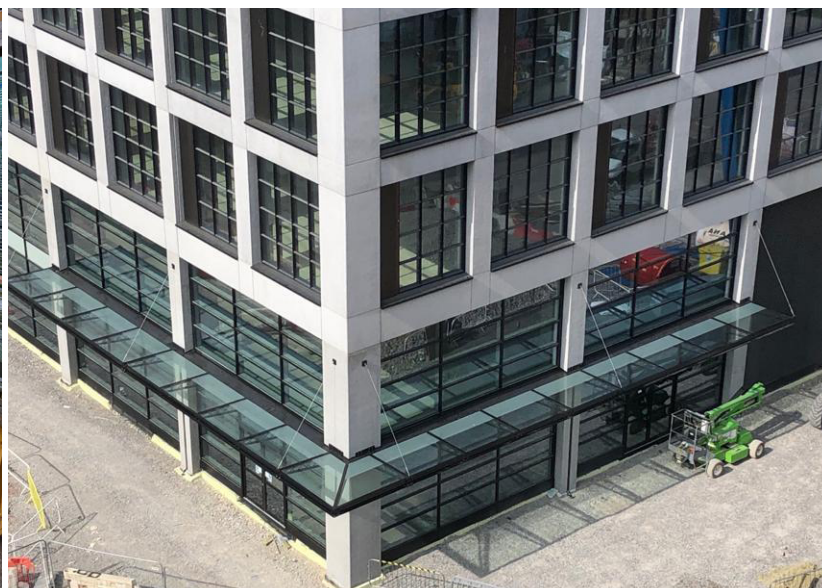




Kite Glass Case Study

The Goods Yard, St. John's, Manchester



Processes included

- Polishing
- Toughening
- Heat Soaking
- Laminating
- Screen-printing

Summary

With a Brutalist design inspired by Manchester's industrial past and the New York warehouse concept, The Goods Yard building in St. John's Quarter, Manchester is a £100m, four-block commercial hub.

Developed by Allied London and being constructed by Lendlease, it forms part of a masterplan for Enterprise City. This new district redevelopment aims to be one of the most concentrated clusters for tech, media and creative local and global businesses in Europe, with brands such as Booking.com (Manchester Goods Yard), WPP (Globe & Simpson), Soho House (Old Granada Studios) and The Farm (ABC).

With 222,000 sq ft office campus, this floor-to-ceiling-height industrial design, full of metalwork and glass that accomplishes plenty of indoor daylight, is pre-let to online travel agency Booking.com with the intention of hosting 3,000 of its staff at the site over the 12-year building lease period.

Kite Glass was contacted to supply the glass for a canopy that was required to achieve CWCT Class 1 category, which are roofs that will be walked upon for occasional cleaning and/or maintenance. By manufacturing and testing the panels using our in-house facility along with an independent consultant, Kite Glass has succeeded in meeting this very specific requirement.

We have used our 34mm LamitecSuper glass, incorporating a special screen-print that had been tested independently, and achieved a PTV slip value in excess of 60. Now complete, this project included the production of 52 panels with a total area of 160m².



Kite Glass, 29 Avro Way
Brooklands Business Park
Weybridge, Surrey, KT13 OYZ

P: 01932 336080
F: 01932 347080

sales@kiteglass.co.uk
kiteglass.co.uk