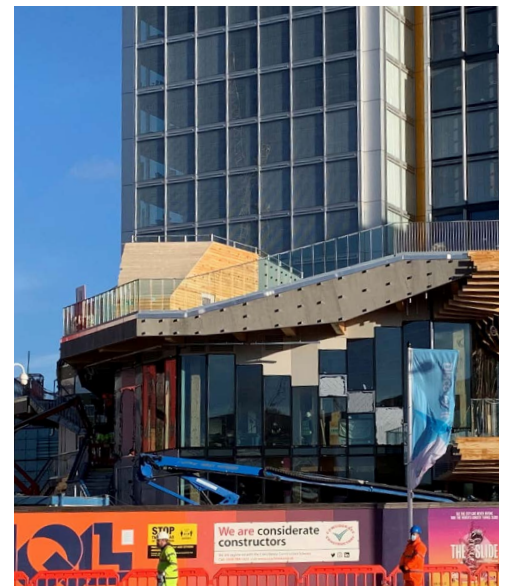
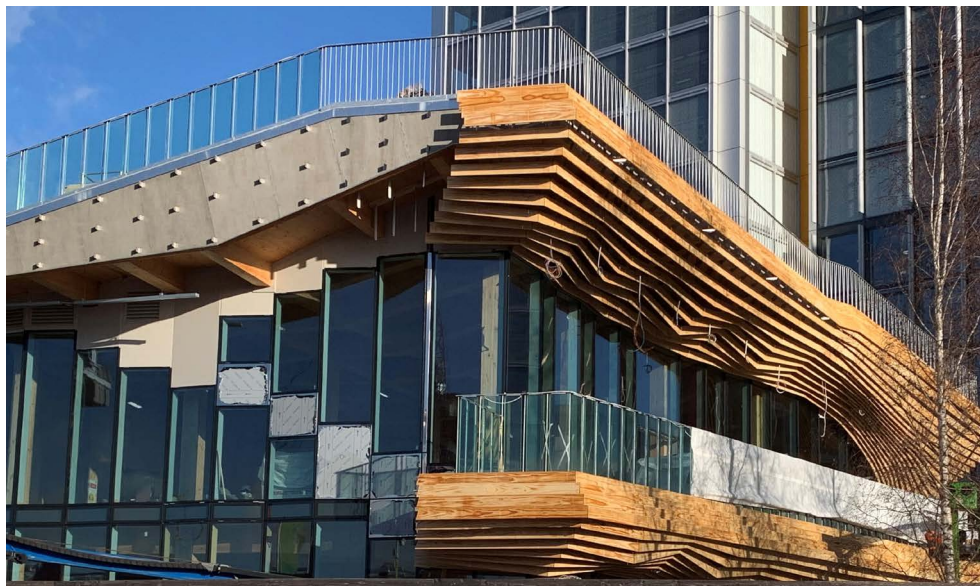


## Kite Glass Case Study

# The IQL Pavillion, Stratford, London



### Processes included

- Clear Heat Streghtened
- Triple Lamination
- Polished all around

### Summary

A new landmark was announced in March 2019 in Stratford called The Pavilion - a new 10,000sq. ft. building within Stratford's International Quarter London (IQL), a hub location for workplaces, homes, shops, restaurants and businesses.

Now on its final stages, this amphitheatre-style multistorey events pavilion is a Lendlease project, constructed predominately out of sustainable cross-laminated timber and glulam, using modern methods of construction, aiming for a BREEAM Excellent energy rating.

The building will house a three-floor restaurant as well as a rooftop bar offering beautiful city views, and will link IQL with the Queen Elizabeth Olympic Park.

Kite Glass has been chosen as the architectural glass manufacturer and supplier for a set of 110 panels of 39.04mm clear heat strengthened SentryGlas® laminated glass, to be used on one of the approach walkways to the London Stadium – home of West Ham United.

Polished all round, these panels are fitted with 2x 1.52mm SentryGlas® interlayers, with specified logos positioned across the panels.



Kite Glass, 29 Avro Way  
Brooklands Business Park  
Weybridge, Surrey, KT13 OYZ

P: 01932 336080  
F: 01932 347080

sales@kiteglass.co.uk  
kiteglass.co.uk